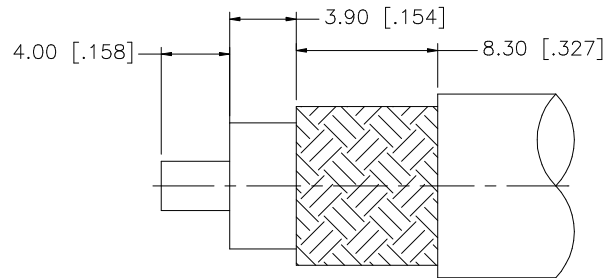
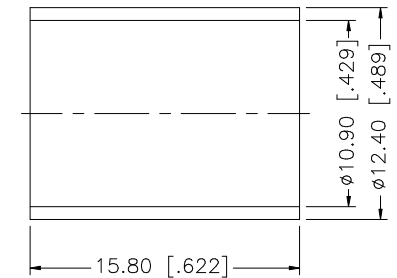
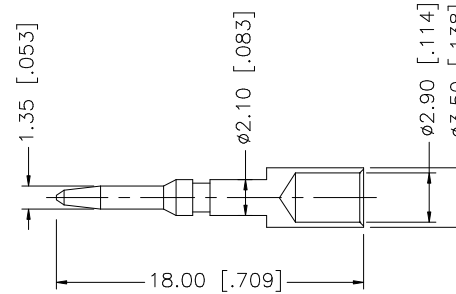
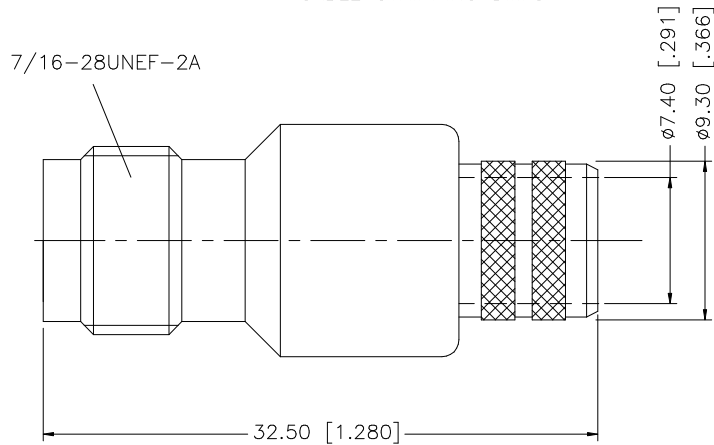


REV.	DATE	DESCRIPTION
NC	05/05/97	INITIAL RELEASE
A	01/11/07	UPDATE DRAWING FORMAT



RECOMMENDED
CABLE STRIPPING DIM'S



NOTE:

1. CRIMPED FERRULE HEX CRIMP SIZE .429"
2. CRIMPED CONTACT PIN HEX CRIMP SIZE .118"

8				<small>UNLESS OTHERWISE SPECIFIED DIMENSIONS ARE IN MILLIMETERS. DIMENSIONS IN [] ARE IN INCHES AND FOR CUSTOMER REFERENCE ONLY.</small> <small>UNLESS OTHERWISE SPECIFIED TOLERANCES FOR MILLIMETERS ARE: 0.5 - 8mm ± 0.20mm 8 - 30mm ± 0.40mm 30 - 120mm ± 0.50mm</small> <small>UNLESS OTHERWISE SPECIFIED TOLERANCES FOR INCHES ARE: .020 - .315 = ± 0.007" .315 - 1.180 = ± 0.015" 1.180 - 4.724 = ± 0.020"</small>	APPROVALS	DATE	<h1 style="color: blue; text-align: center;">Amphenol Connex</h1>		
7					DRAWN	G.R.S.		01/11/07	TNC REVERSE POLARITY CRIMP JACK (FOR BELDEN 9913, 9914)
6					CHECKED				
5					ISSUED				
4	FERRULE	COPPER	NICKEL		1	SHEET		1 OF 1	
3	CONTACT PIN	BRASS	GOLD	1	PART DESCRIPTION		122392RP		
2	INSULATOR	TEFLON	NATURAL	1	PART NO.				
1	BODY	BRASS	NICKEL	1	DWG. NO.		122392RP.DWG		
	DESCRIPTION	MATERIAL	FINISH	QTY	DO NOT SCALE DRAWING		REV. A	SIZE A	SCALE NA